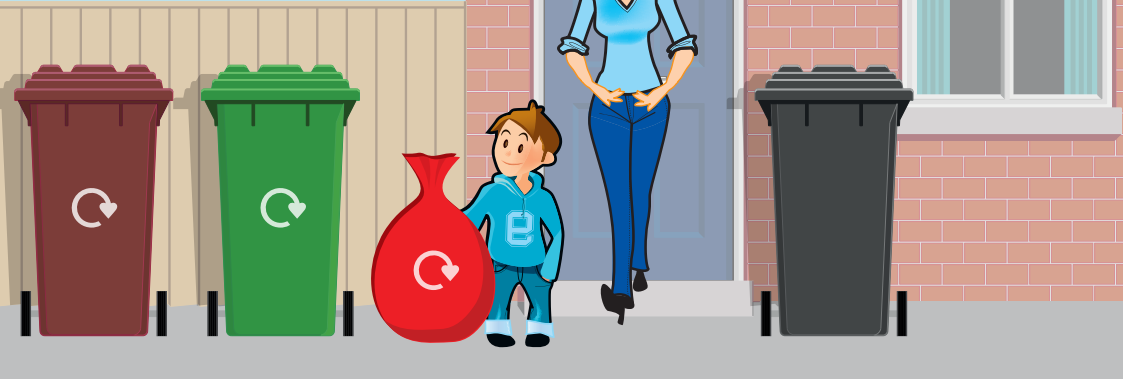


2016/17



South Derbyshire District Council
Your Recycling, Composting
and Refuse Service

it's as easy as 1 2 3

Collection calendar from October 2016 to October 2017

easy 😊😊
green 😊
recycling scheme

 recycle
for South Derbyshire

People | Place | Progress

www.south-derbys.gov.uk



South
Derbyshire
District Council

So where does everything go?

Easy Green Recycling Bin

Main Bin

Empty Aerosols, Clean Foil, Food Tins and Cans,
Glass Bottles and Jars, Margarine Tubs, Yoghurt Pots, Fruit &
Mushroom Punnets, Plastic Bottles

Inner Caddy

Paper, Junk Mail, Newspapers, Cardboard,
Phone Directories, Magazines

Red Sack

Clothes, Curtains, Rags, Shoes, Belts, Handbags,
Underwear, Towels

**Sorry we cannot take black plastic items or
take-away pizza boxes**



Brown Compost Bin

Food Waste

Plate Scrapings, Meat, Bones, Fish, Stale Bread, Cake,
Dairy, Fruit, Vegetables, Tea Bags, Coffee Grounds
Food waste may be wrapped in compostable bags

Garden Waste

Weeds, Grass, Leaves, Branches, Pet Straw, Woodshavings

**Sorry we cannot take: Plastic Bags, Plastic Items, Non
Compostable waste, Turf, Soil, Garden Rubble, Stones**



We will not be able to collect your green recycling bin or your brown compost bin if the wrong materials (please check the Wanted Lists) are found in the bin; you will need to remove the 'wrong items' and we will not return to collect any "contaminated" bins until your next collection day

We want your recyclables

For trouble-free waste collections, please ensure:

1. All bins are out at the edge of your property by no later than 06:00 on collection day (even if we normally arrive later in the day, sometimes things change and we may arrive earlier than usual)
2. The bin lids are closed and all waste is in the bin (we won't take extra waste from your black or brown bin)
3. That your Brown bin and Green bin (and its black caddy) only contain materials on the "Wanted Lists" (so we don't have to leave your bin unemptied because it contains materials we can't recycle. Our crews are not allowed to remove unwanted items from your bin)

"In return we will endeavour to:"

- Empty your bins on the advertised collection day.
- Leave your bin in the same place, after emptying, we found it and not blocking drives or footpaths.
- Leave your street as tidy, or tidier than before collections.

In the event of a missed collection please let us know by no later than 3PM the day after collection day

"There may be some occasions due to extreme weather or vehicle breakdowns when we are unable to collect your bin on the normal collection day, if this occurs we will endeavour to collect your bin at the earliest opportunity, we will publicise alternative arrangements through our website, www.south-derbys.gov.uk."

Black Refuse Bin

Non-Recyclable Refuse including

Black Plastic Items, Pizza Boxes, Juice Cartons (Tetrapak), Plastic Bags, Cellophane, Plastic Wrapping Packets, Bubble Wrap, Polythene, Polystyrene, Plant Pots, Sticky Tape, Nappies, Pet Waste (Bagged), Toys, Foam Packaging, Coathangers, Rigid Plastic Items

No Rubble or Scrap Metal

